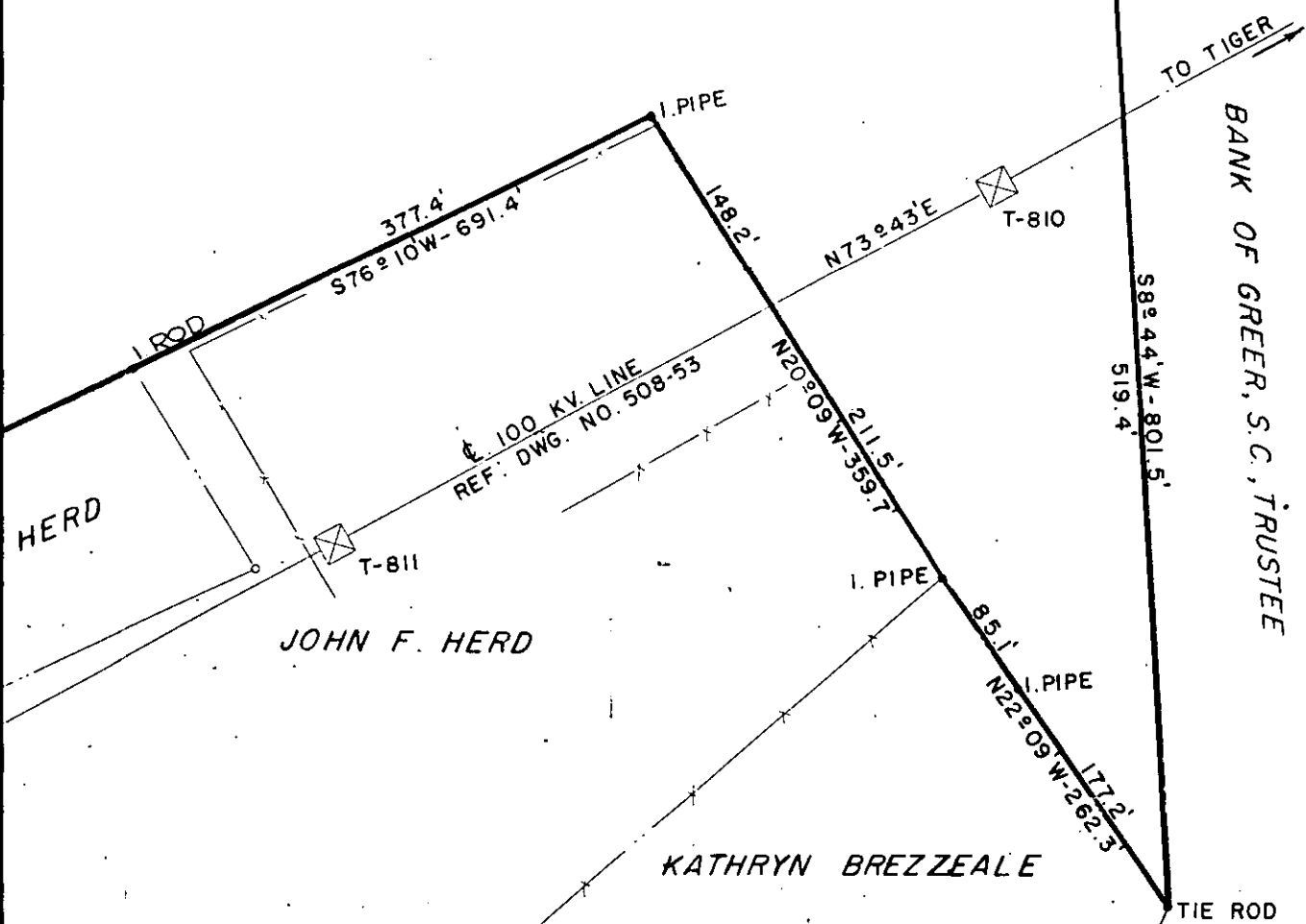


GREENVILLE COUNTY BOARD OF EDUCATION
"WOODLAND SCHOOL"

S78°13'E-999.7'
400.2' I. PIPE 199.8' I. PIPE 200.0' I. PIPE

89 ACRES



DUKE POWER COMPANY
GREER SOUTH RETAIL SUBSTATION LOT
ACQUIRED FROM
BANK OF GREER, S.C., TRUSTEE
GREER, S.C.
GREENVILLE COUNTY

SCALE: 1" = 100'
BOOK NO. 1102

SEPT. 2, 1971
FILE NO. 151-54

Plat Recorded November 4th, 1971 at 3:14 P. M. #12854